

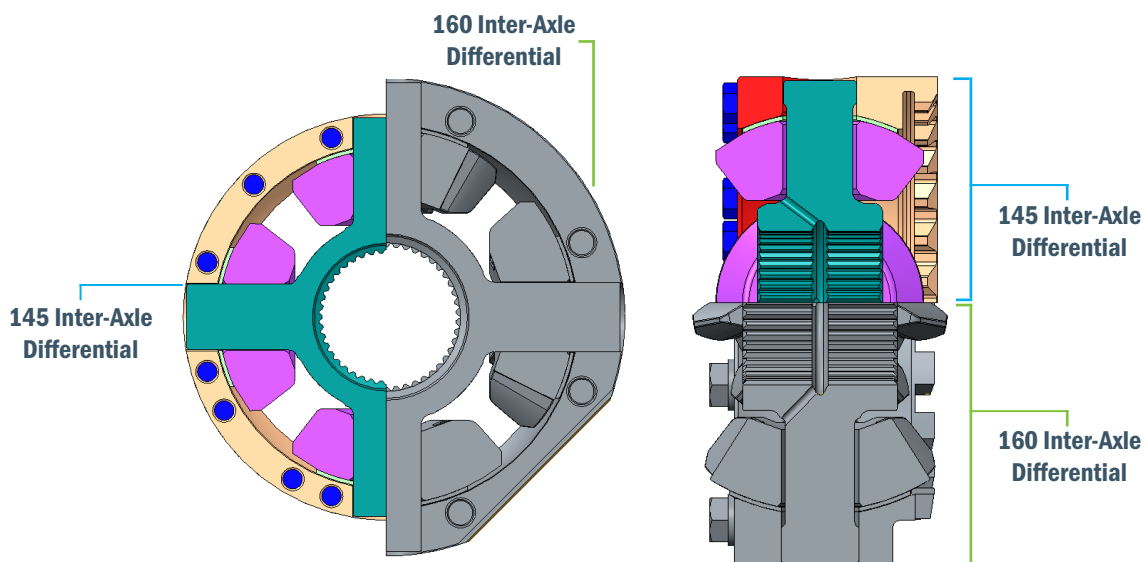
OVERVIEW

AxleTech upgraded the common 145 series thru-drive carrier. The heavy-duty 145HD carrier incorporates the field-proven 160 inter-axle differential (IAD), which supports high speed and high torque applications. The robust 145HD carrier is specifically designed for severe duty vehicles.

FEATURES AND BENEFITS

HEAVY-DUTY 160 IAD

- 160 IAD features increased bearing capacity and size of spider, pinions, and side gears
- 20% reduction in overall IAD stresses compared to 145 IAD
- IAD lock allows axle to use all tractive effort available
- Increased input shaft size for 160 IAD components reduces torsional stress by 20%
- Maximum torque capacity increased to 2,050 lb per foot for a 24% improvement
- Pump maintains continual lubrication of IAD components in both forward and reverse



FEATURES AND BENEFITS

Improved gear design

- Optimized helical gear geometry to increase safety and reduce noise
- Provides two helical gear ratios (0.83 and 1.00) for high speed applications
- New hypoid pinion design decreases bending stress and improves fatigue life

Driver-Controlled Differential Lock (DCDL)

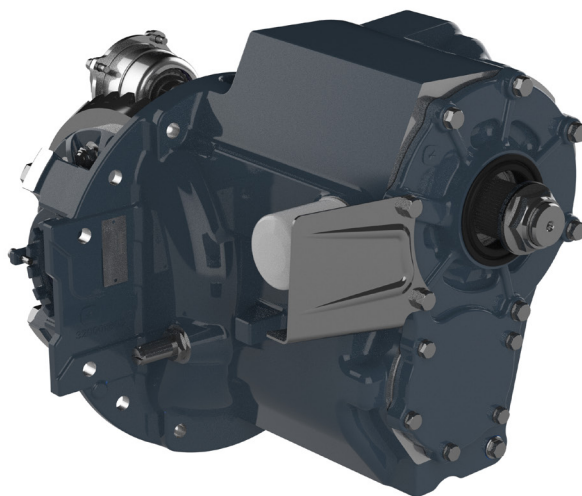
- Main differential lock allows each wheel to use all tractive effort available

Carrier shell

- Time-proven one-piece design enhanced to incorporate 160 IAD components
- Yoke distance only increased 1/4" so the customer does not require major driveline changes

Improved performance

- 160 IAD decreases chances of breakage due to tire spin causing failures and downtime



HEADQUARTERS

AxleTech
1400 Rochester Road
Troy, Michigan 48083
USA

+1 877-877-9717
Int'l +1 248-658-7200

CUSTOMER SERVICE

+1 877-547-3907
+1 248-658-7345

EMAIL

OE: sales@axletech.com
Aftermarket: aftermarket@axletech.com



AXLETECH.COM