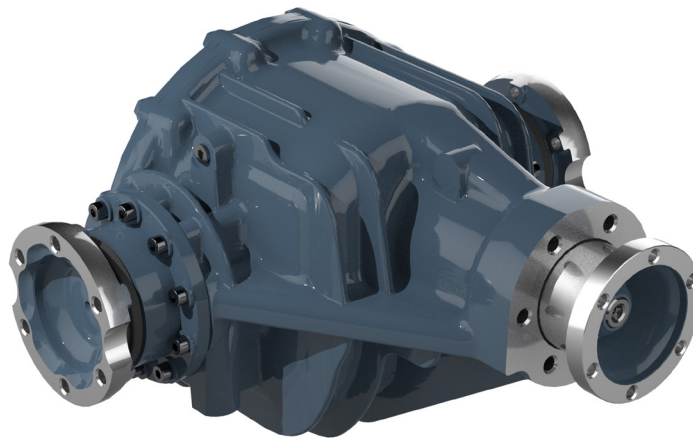


## OVERVIEW

AxleTech's CSL style differential carrier (single speed limited slip) is designed to meet the demands of high-mobility vehicles. With its aluminum housing, this carrier is ideal for light-weight vehicle applications. The compact design is well suited for vehicles using an independent suspension system with limited packaging space.

## TECHNICAL SPECIFICATIONS

|   |                                  |
|---|----------------------------------|
| <b>Housing Material</b>                         | Aluminum                         |
| <b>Gearset Type</b>                             | Hypoid bevel gearset             |
| <b>Available Ratios</b>                         | 3.21 to 4.11                     |
| <b>Differential</b>                             | Limited Slip                     |
| <b>Ring Gear Outer Diameter in (mm)</b>         | 8.9 (226)                        |
| <b>Max Peak Torque Rating lb-ft (N-m)</b>       | 8,200 (11,120)                   |
| <b>Max Continuous Torque Rating lb-ft (N-m)</b> | 6,150 (8,340)                    |
| <b>Pinion Offset in (mm)</b>                    | 1.5 (38.1)                       |
| <b>Pinion Spline</b>                            | 24T                              |
| <b>Pinion Joint Series</b>                      | CV15 flange or 24T-40T coupler   |
| <b>Stub Shaft Flange to Flange in (mm)</b>      | 17.28 (439)                      |
| <b>Stub Shaft Mating CV Joint</b>               | VL21                             |
| <b>Temperature Regulation</b>                   | Cooling ribs designed into cover |
| <b>Approximate Weight lb (kg)</b>               | 100 (45.36)                      |



### HEADQUARTERS

AxleTech  
1400 Rochester Road  
Troy, Michigan 48083  
USA

+1 877-877-9717  
Int'l +1 248-658-7200

### EMAIL

OE: [sales@axletech.com](mailto:sales@axletech.com)  
Aftermarket: [aftermarket@axletech.com](mailto:aftermarket@axletech.com)

[AXLETECH.COM](http://AXLETECH.COM)