

OVERVIEW

AxleTech is offering a new line of hydraulic disc brakes, the HD860 Series, engineered to provide superior stopping distance, quick change pads for reduced down time, and higher torque capacities when compared to the competition. The HD860 Series is designed for heavy-duty on-highway, military, and specialty applications.

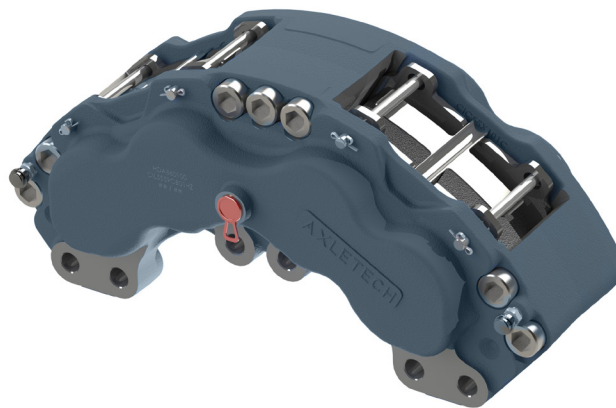
TECHNICAL SPECIFICATIONS

Number of pistons x diameter	8 x 60 mm
Nominal torque Lbf.in (kN.m)	215,000* (24.3)
Disc diameter in (mm)	15.7-16.1 (400-410)
Typical disc rotor thickness in (mm)	1.18 (30)
Maximum working pressure PSI (bar)	2,030 (140)
Typical wheel size in (mm)	20 (508)
GAWR range lb (tonnes)	14,300 to 23,600 (6.5 to 10.7)

* Torque value for reference only; may vary depending on friction, rotor size and input pressure – Configuration to be determined based on vehicle application.

FEATURES & BENEFITS

- Opposed-piston fixed caliper provides superior stopping power
- Unhanded design with compact swept profile, and optimized casting geometry for reduced weight and easy installation
- Split caliper design allows caliper variants on a variety of disc thicknesses
- 11.5% larger piston area
- Quick change pads with optimized pad area allows reduced down time- 34% more pad area than competition
- Automotive DOT 3/4 standard- HDA (mineral oil version optional- HDM)
- Premium friction materials for low fade and high speed
- 33% additional torque capacity than competitors



HEADQUARTERS

AxleTech
1400 Rochester Road
Troy, Michigan 48083
USA

+1 877-877-9717
Int'l +1 248-658-7200

EMAIL

OE: sales@axletech.com
Aftermarket: aftermarket@axletech.com

AXLETECH.COM