

HIGH SPEED PLANETARY AXLES

STEERABLE



OVERVIEW

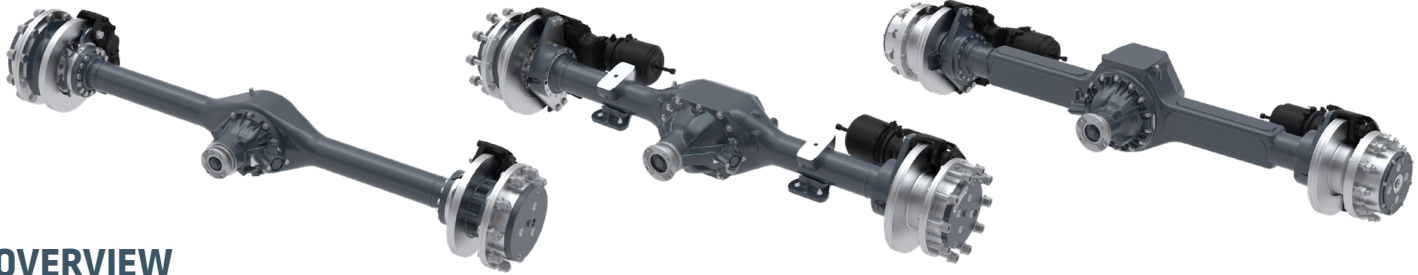
AxleTech's High Speed Planetary axles are the optimal drivetrain solutions for applications requiring high-mobility and maneuverability. Our 3000, 4000, and 5000 Series steerable axles provide durability, performance, and ground clearance in rough terrain. These axles are suitable for various vehicle configurations, including 4x4, 6x6, 8x8, 10x10 or 12x12 depending on the series.

TECHNICAL SPECIFICATIONS

	3000 SERIES STEERABLE	4000 SERIES STEERABLE	5000 SERIES STEERABLE
Rating lb (kg)	Up to 12,100 (5,000)	Up to 18,700 (8,500)	Up to 28,700 (13,000)
Axle weight lb (kg)	Approx. 1,100 (500)	Approx. 1,400 (650)	1,870 to 2,100 (850 to 950)
Axle housing	Stamped / Ductile iron	Cast steel / Ductile iron	Cast steel or Stamped
Axle type	Full-floating, front driving, steering	Full-floating, front driving, steering	Full-floating, front driving, steering
Axle ratios	5.1 - 28.0	4.35 - 13.74	4.8 - 28.0
Planetary ratios	3.22, 3.55, 5.6	3.22, 3.555, 4, 4.63, 5.6	3.555, 4, 4.63, 5.6
Wheel mount in (mm)	Hub piloted 8 Stud - 10.8 BC (275), 10 Stud - 13.19 BC (335), 10 Stud - 11.25 BC (285)	Hub piloted 10 Stud - 13.19 BC (335), 10 Stud - 11.25 BC (285)	Hub piloted 10 Stud - 13.19 BC (335), 10 Stud - 11.25 BC (285)
Service brakes in (mm)	15.0 x 6.0 (381 x 152) RSA, 15 x 6.0 (381 x 152) Duplex wedge brake, 16.5 x 6.0 (419 x 152) S-Cam, DB22LT ADB, ADB 385, 4 x 2.2 (4 x 56) HDB, 4 x 2.4 (4 x 60) HDB	16.5 x 6.0 (419 x 152) S-Cam, 16.5 x 7.0 (419 x 178) S-Cam, 15 x 6.0 (381 x 152) Duplex wedge brake, 16.2x7.8 (410 x 200) Duplex wedge brake, DB22 ADB, DB22LT ADB, ADB 385, 4 x 2.2 (4 x 56) HDB, 4 x 2.4 (4 x 60) HDB, 16.2 x 7.8 (410 x 200) Duplex wedge brake	16.5 x 7.0 (419 x 178) S-Cam, DB22 ADB, 16.2 x 7.8 (410 x 200) Duplex wedge brake
Rim size in (mm)	19.5, 20 (495, 508)	19.5, 20 (495, 508)	20, 22.5, 24 (508, 572, 610)
Hub flange to flange in (mm)	73, 80.1, 83.2, 87.5 (1,854, 2,035, 2,113, 2,223) and others	83.2, 87.1, 89.6, 91.1, 93.5 (2,113, 2,212, 2,276, 2,314, 2,375) and others	91.1, 92.6, 93.5, 98.1, 101.1 (2,313, 2,352, 2,375, 2,492, 2,568) and others
Mounting centers in (mm)	24.0, 29.7, 32.3, 35.0 (610, 754, 820, 890) and others	24, 32.3, 32.7, 33, 33.5, 33.8, 34.5, 35 (610, 820, 831, 838, 850, 860, 876, 890) and others	32.3, 33.5, 35.8 (820, 850, 911) and others
Track in (mm)	As requested by the customer	As requested by the customer	84, 86, 87, 91, 94 (2,134, 2,184, 2,210, 2,311, 2,388) and others
Pinion joint series	KV 120, KV 150, MECH 5C, and others	KV 150, KV 180, SAE 1710 or 1810, 16TYS or 17 TYS, MECH 6C, 7C or 8.5C, and others	KV 150, KV 180, SAE 1710 or 1810, 16TYS or 17 TYS, MECH 6C, 7C or 8.5C, and others
Steering joint type	Double cardan	Double cardan	Double cardan
Steering angle	40°	42°	42°
Camber	1°, 2°	1°, 2°	0°, 0.5°, 2°
King pin inclination	7°	7°	7°
Toe-in in (mm)	Adjustable +/- 0.8 (20)	Adjustable +/- 0.8 (20)	Adjustable +/- 0.8 (20)
Axle mounting	Spring centers and pad width to vehicle requirements	Spring centers and pad width to vehicle requirements	Spring centers and pad width to vehicle requirements
ABS hub compatibility	Standard	Standard	Standard
Input rotation	Clockwise, Counterclockwise	Clockwise, Counterclockwise	Clockwise, Counterclockwise
CTIS compatibility	Yes	Yes	Yes

HIGH SPEED PLANETARY AXLES

RIGID



OVERVIEW

AxleTech's High Speed Planetary axles are the optimal drivetrain solutions for applications requiring high-mobility and maneuverability. Our 3000, 4000, and 5000 Series rigid beam axles provide durability, performance, and ground clearance in rough terrain. These axles are suitable for various vehicle configurations, including 4x4, 6x6, 8x8, 10x10 or 12x12 depending on the series.

	3000 SERIES RIGID	4000 SERIES RIGID	5000 SERIES RIGID
Rating lb (kg)	Up to 12,500 (5,500)	Up to 22,000 (10,000)	Up to 30,000 (13,600)
Axle weight lb (kg)	Approx. 880 (400)	Approx. 1,000 (600)	1,430 to 1,870 (650 to 850)
Axle housing	Stamped / Ductile iron	Cast steel / Ductile iron	Cast steel or Stamped
Axle type	Full-floating, rigid	Full-floating, rigid	Full-floating, rigid
Axle ratios	5.1 - 28.0	4.35 - 13.74	4.8 - 28.0
Planetary ratios	3.22, 3.55, 5.6	3.22, 3.555, 4, 4.63, 5.6	3.555, 4, 4.63, 5.6
Wheel mount in (mm)	Hub piloted 8 Stud - 10.8 BC (275), 10 Stud - 13.19 BC (335)	Hub piloted 10 Stud - 11.25 BC (285), 10 Stud - 13.19 BC (335)	Hub piloted 10 Stud - 13.19 BC (335), 10 Stud - 11.25 BC (285)
Service brakes in (mm)	15.0 x 6.0 (381 x 152) RSA, 15.0 x 7.0 (381 x 178) RSA and RDA, 15 x 6.0 (381 x 152) RDA, 16.5 x 6.0 (419 x 152) S Cam, DB22LT ADB, ADB 385, 4 x 2.2 (4 x 56) HDB, 4 x 2.4 (4 x 60) HDB	15.0 x 6.0 (381 x 152) RDA, 15.0 x 7.0 (381 x 178) RSA and RDA, 16.5 x 6 (419 x 152) S Cam, 16.5 x 7.0 (419 x 178) S Cam, 16.2 x 7.8 (410 x 200) RSA and RDA, DB22LT ADB, DB22 ADB, ADB 385, 4 x 2.2 (4 x 56) HDB, 4 x 2.4 (4 x 60) HDB, 16.2 x 7.8 (410 x 200) Duplex wedge brake	16.5 x 7.0 (419 x 178) S Cam DB22 ADB, 16.2 x 7.8 (410 x 200) Duplex wedge brake
Rim size in (mm)	19.5, 20 (495, 508)	19.5, 20, 24 (508, 610)	20, 22.5, 24 (508, 572, 610)
Hub flange to flange in (mm)	80, 81.9, 89.8 (2,032, 2,080, 2,281) and others	71.0, 81.7, 86.2, 87.6, 88, 90.6 (1,803, 2,075, 2,189, 2,225, 2,235, 2,301) and others	54.5, 71.0, 84.9, 88.0, 91.9, 92.6, 96.6, 108.6, 110.0 (1,384, 1,803, 2,156, 2,235, 2,334, 2,352, 2,453, 2,758, 2,794) and others
Mounting centers in (mm)	37.0, 37.4 (940, 950) and others	38.7, 39.4, 40.5, 41.3 (983, 1,001, 1,029, 1,049) and others	38.8, 40.4, 40.5, 43.0 (985, 1,026, 1,029, 1,092)
Track in (mm)	As requested by the customer	As requested by the customer	Tracks defined with 5" rim offset 44.5, 61.0, 74.9, 78.0, 81.9, 82.6, 86.6, 98.6, 100.0 (1,130, 1,550, 1,902, 1,981, 2,080, 2,098, 2,200, 2,504, 2,540) and others
Pinion joint series	KV 120, KV 150, MECH 5C and others	KV 150, KV 180, SAE 1710 or 1810, 16TYS or 17 TYS, MECH 6C, 7C or 8.5C, and others	KV 150, KV 180, SAE 1710 or 1810, 16TYS or 17 TYS, MECH 6C, 7C or 8.5C, and others
Axle mounting in (mm)	Spring centers and pad width to vehicle requirements	Spring centers and pad width to vehicle requirements	Spring centers and pad width to vehicle requirements 38.8, 40.5, 43.0 (986, 1,029, 1,092)
ABS hub compatibility	Standard	Standard	Standard
Input rotation	Clockwise, Counterclockwise	Clockwise, Counterclockwise	Clockwise, Counterclockwise
CTIS compatibility	Yes	Yes	Yes

HEADQUARTERS
AxleTech
1400 Rochester Road
Troy, Michigan 48083
USA
+1 877-877-9717
Int'l +1 248-658-7200

CUSTOMER SERVICE
+1 877-547-3907
Int'l +1 248-658-7345

EMAIL
OE: sales@axletech.com
Aftermarket: aftermarket@axletech.com

AXLETECH.COM