



**EXCLUSIVELY AVAILABLE FROM
AXLETECH FOR TRANSIT APPLICATIONS**

OVERVIEW

AxleTech is the exclusive North American distributor of the Circuitlink Tacholink T5 Event Data Recorder (EDR) for transit applications. The T5 is a powerful on-board and online EDR, which utilizes a file based system in which a daily data file is created and continuously built on while the vehicle is operating and data is being collected. The Intelligo™ software offers an extensive range of T5 reports, which are available to assist fleet managers as an active tool to manage driver profiling, fleet logistics, mileage reporting, ensure regulatory requirements are being met, and/or as an Event Data Recorder for accident reconstruction.

FEATURES & BENEFITS

DATA RECORDED:

- Data is time & date stamped and recorded in non-volatile flash memory
- Real Time Clock (RTC) synchronized with GPS updates
- Capable of Geofence monitoring
- Data capture examples includes:
 - Vehicle speed
 - Engine speed (RPM)
 - Start/stop time
 - GPS location
 - Ignition on/off
 - Heavy breaking/acceleration/cornering
 - Odometer
 - Driver ID

DATA INPUTS & OUTPUTS:

- 100 mixed inputs (digital or analog)
- 1x CANBus connections (e.g. J1939)
- 4 dedicated outputs capable of driving external relays

DATA DOWNLOAD:

- WiFi when LAN available
- 3G modem when cellular network available
- Continuous GPS tracking

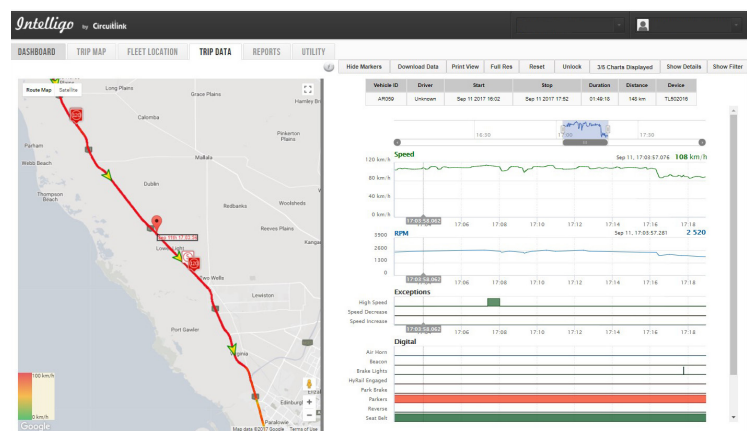
ONLINE ACCESSIBILITY:

- Ability to update software and configuration files remotely using the on-board boot-loader
- Optional EDR UPS is available to allow continued operation for a short period after an unexpected power loss

ENCLOSURE

- Built into a high impact, chemical resistant, resin enclosure which provides sealing options up to IP 67 and meeting the environmental standards of J1455 thus providing protection against the harshest of anticipated environments

**The latest in data capture,
control & communication**



Circuitlink



DATA SHEET

| | |
|-----------------------|--|
| POWER | <ul style="list-style-type: none"> • Input V 9-34V DC, 42V & 72V peak respectively • Optional external surge and overvoltage protection available • Input power <4W or <16W with cellular modem |
| COMMUNICATIONS | <ul style="list-style-type: none"> • RS232 - ISO 7816 smartcard support • RS485 - Half/Full duplex • USB2.0 • 1x CANBus - FlexCAN / J1939 compatible • WiFi 2.4 GHz 802.11 B/G/N • Cellular modem - 3.5G/3G/2G Pentaband worldwide coverage |
| SENSORS | <ul style="list-style-type: none"> • Accelerometer 3-axis (2G/4G/8G/16G selectable) 50G option available • GPS operating upto10Hz |
| INPUTS | <ul style="list-style-type: none"> • RPM (dedicated-analog sampled) • Speed (dedicated-analog sampled) • Mixed Signal x 100 (programmable analog inputs: analog voltage, digital input emulation) |
| OUTPUTS | <ul style="list-style-type: none"> • Relay x 4 (open collector 200mA) • Digital/frequency x 4 programmable PWM outputs |
| FUNCTIONAL | <ul style="list-style-type: none"> • RTC +/- 3ppm over -10-65° C, 95 sec/yr free drift, corrected via GPS time synch • Backup battery service life of 2 years • Networking (DHCP client and DNS client) • Firmware updates - onboard bootloader allowing remote updating • Data reporting & downloading via USB mass storage / WiFi / cellular • Device configuration via USB mass storage / WiFi / cellular |
| STORAGE | <ul style="list-style-type: none"> • 4GB standard, 32GB optional |
| ENVIRONMENTAL | <ul style="list-style-type: none"> • Dimensions 125 (W) x 135 (D) x 57 (H) mm • Weight < 500 g • Operating temperature: up to -40 to 105° C (-40 to 220° F) dependent on selected options • Enclosure assembly provides sealing option levels to IP 65, IP66 or IP67 • Resistant to fluids found in typical industrial applications |

HEADQUARTERS

AxleTech
1400 Rochester Road
Troy, Michigan 48083
USA

+1 877-877-9717
Int'l +1 248-658-7200

CUSTOMER SERVICE

+1 877-547-3907
Int'l +1 248-658-7345

EMAIL

OE: sales@axletech.com
Aftermarket: aftermarket@axletech.com

AXLETECH.COM